

SPECIFICATION FOR FLOODLIGHTS

FEATURES

- **High brightness:** Using high-power LED light source, the brightness is high and uniform, ensuring that every corner is clearly visible.
- **Energy saving and environmental protection:** Lighting fixtures are energy-efficient and have a long lifespan, allowing you to reduce carbon emissions while saving energy costs.
- **Waterproof and dustproof:** IP66 protection level, fearless of wind, rain, and dust, suitable for various harsh environments.
- **Easy to install:** easy to replace and maintain, reducing operating time.



50W/White Reflector



50W/Silvery Reflector



100W/White Reflector



100W/Silvery Reflector

PRODUKT PARAMETER

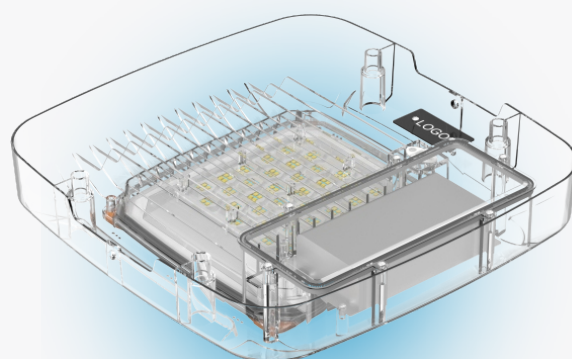
Mode	HYG-FY1-50	HYG-FY2-50	HYG-FY1-100	HYG-FY2-100
Size (mm)	234X234X60	256X234X162	324X324X65	349X324X162
Type	Reflector	White Reflector	Reflector	White Reflector
Material	Aluminum+Glass			
LED Driver	MEAN WELL / Inventronics			
Input Voltage	A85-265 AC 50 60Hz			
Luminous Flux	140lm/W			
CCT	3000K/4000K/6500K			
Light Source	3030x88pcs	5050x16pcs	3030x152pcs	5050x36pcs
CRI	>Ra80			
Lumen Output as per LM79 (lumens)	7000LM	7000LM	14000LM	14000LM
Beam Angle	15°/25°/36°/48°/60°/120°			
Dimmable	0-10V/DALI Optional			
IP code	IP66			
Warranty period	3-5 years			



1. Optional style: Reflector/White Reflector.
2. Precise light distribution to reduce light pollution.
3. Beam angles: 15/24°/36°/48/60°/120°.
4. High reliability and durability, low failure rate. Waterproof and dustproof.
5. Thermal-Electrical divided structure.
6. The appearance is streamlined, the structure is compact, and it is easy to install.

Note

1. Installation must be done by professional electricians.
2. Do NOT take apart the product. It may be dangerous.
3. Do NOT stare at the light with naked eyes. It is harmful to eyes.
4. For outdoor lighting, waterproof measurements must be done to the cable terminals.

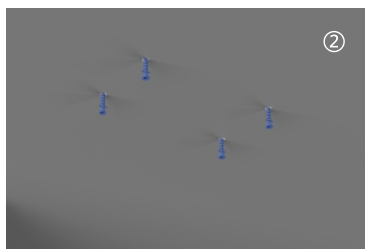
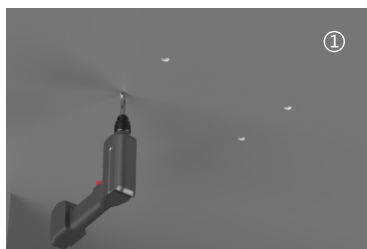


Clear View

INSTALLATION INSTRUCTIONS

A variety of installation methods can be selected to meet the needs of different lighting places.

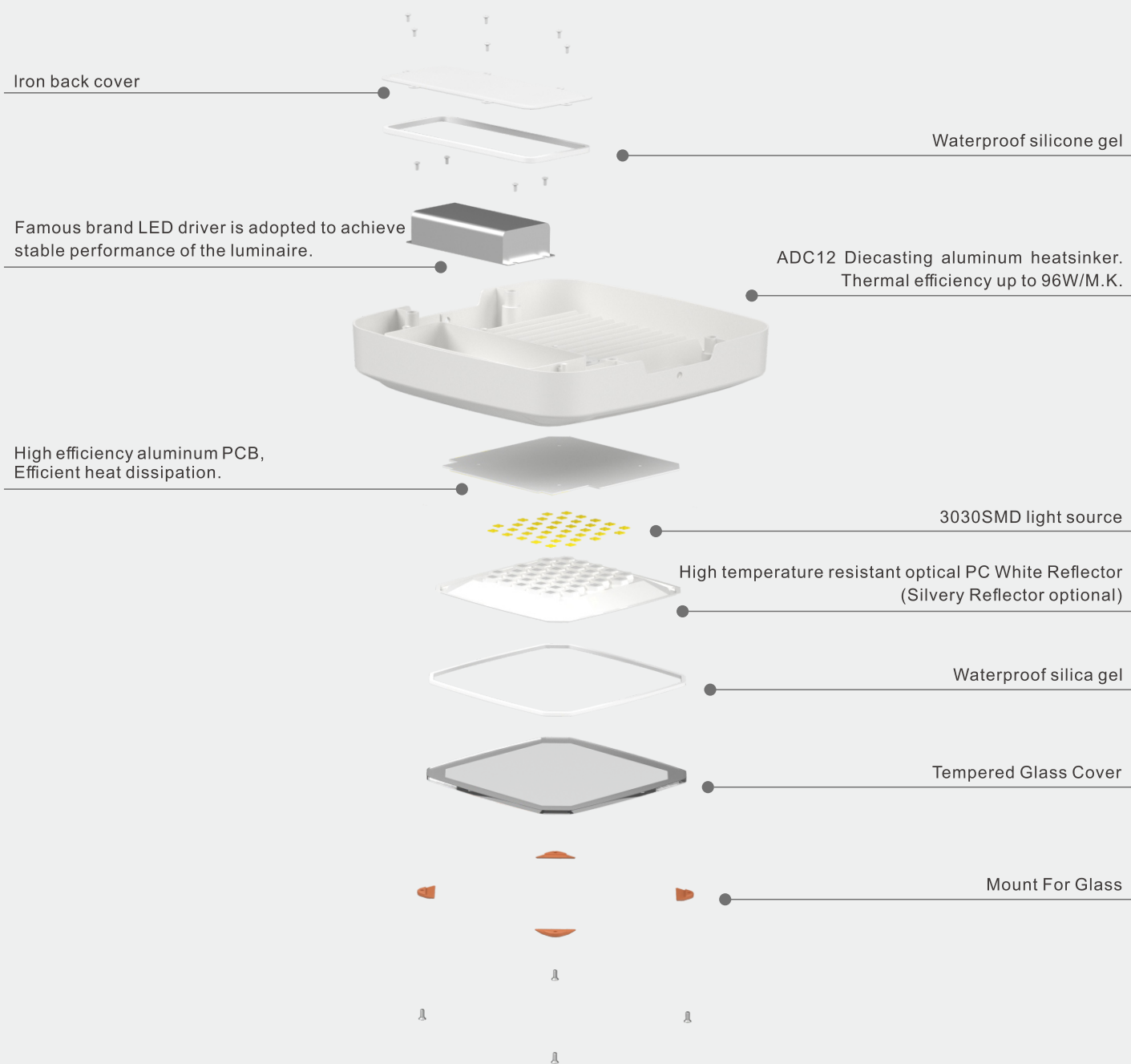
Surface Mounted Installation



U Type Bracket Installation



DECOMPOSITION DIAGRAM



Suitable for cold areas



Optional Installation Methods

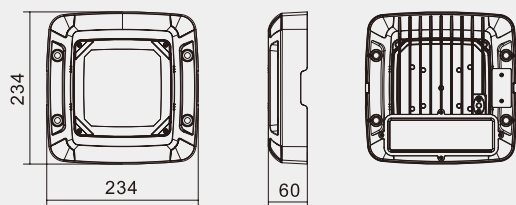


Surface Mounted Installation

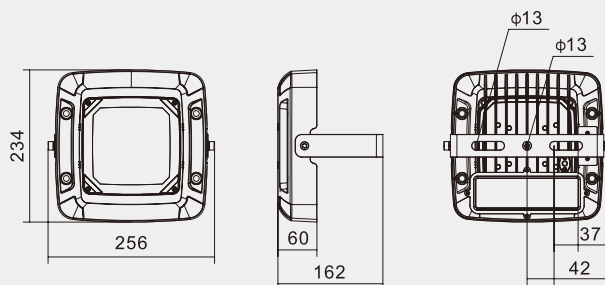


U Type Bracket Installation

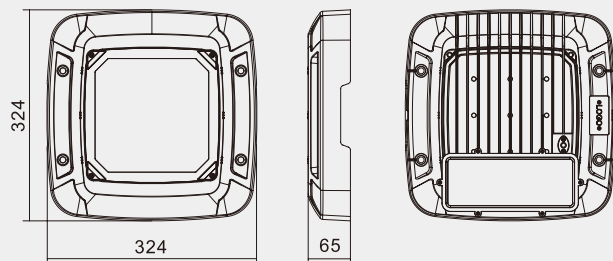
PRODUCT SIZE



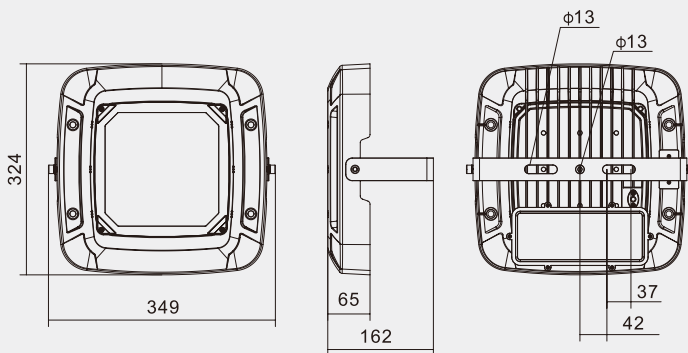
50W
Surface Mounted Installation



50W
U Type Bracket Installation



100W
Surface Mounted Installation



100W
U Type Bracket Installation

PACKING LIST



Mode NO	HYG-FY-50	HYG-FY-100
Carton Size(mm)	238x63x234	330x70x33
Color box size(mm)	490x335x250	370x345x345
PCS/ctn	10	5
KGS	17KG	15.5KG

MULTI ANGLE PRODUCT DIAGRAM



WIDELY APPLICABLE TO

Suitable for cold storage, gas stations, eaves and similar places.



Cold storage



Gas station



Balcony